

FOR LEASE: 600 ST. MARY'S STREET • RALEIGH, NC 27605



Proposed Gaston Street frontage.

Carter Worthy Commercial Inc. is pleased to offer **ST. MARY'S SQUARE**, located at **600 ST. MARY'S STREET** in Raleigh, North Carolina. Formerly Mitchell's Funeral Home, this 15,600 SF property is well-suited for a single tenant or for retail and office suites ranging from 1,100 to 15,000 SF. The property features available parking and a covered porch for outdoor dining. An ideal location halfway between Cameron Village and Glenwood South make this a very sought after space in the heart of Raleigh's renaissance. For more information or a tour of the property, please contact Julian Williamson at 919-828-3866.



PROPERTY OVERVIEW

- For Lease – 600 St. Mary's Street
- Entire building "as is" for \$9/SF NNN
- Rates for smaller spaces will be quoted based on tenant needs
- Retail and office suites from 1,100 to 15,000 sq feet
- Well-suited for single tenant such as school, church, non-profit or institutional user
- Tenant improvements available based on tenant needs
- Available parking
- Covered porch for outdoor dining
- Ideal location halfway between Cameron Village and Glenwood South
- Includes 3,000+ sq ft meeting room with 12' ceilings

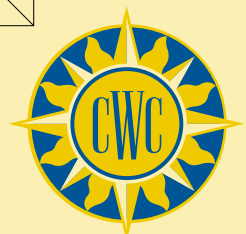
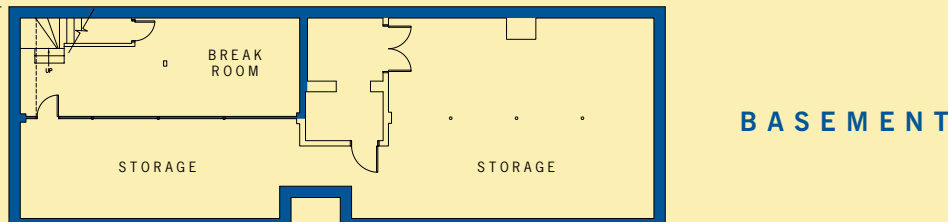
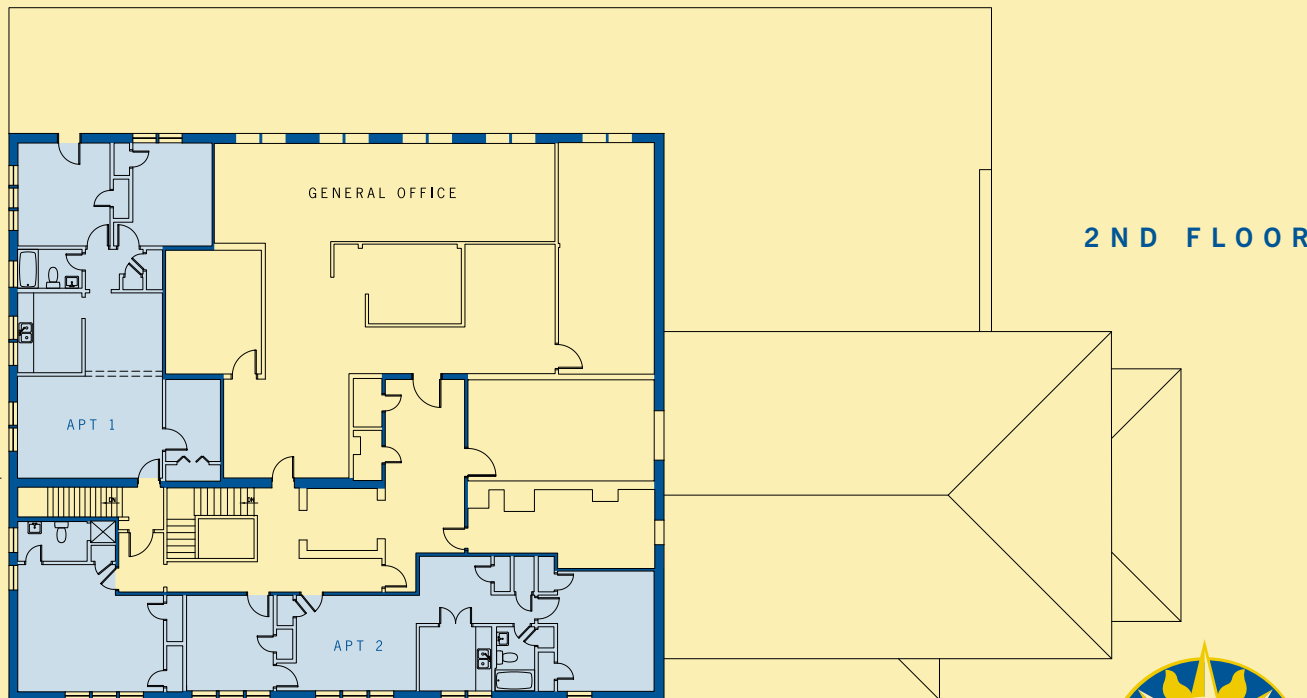
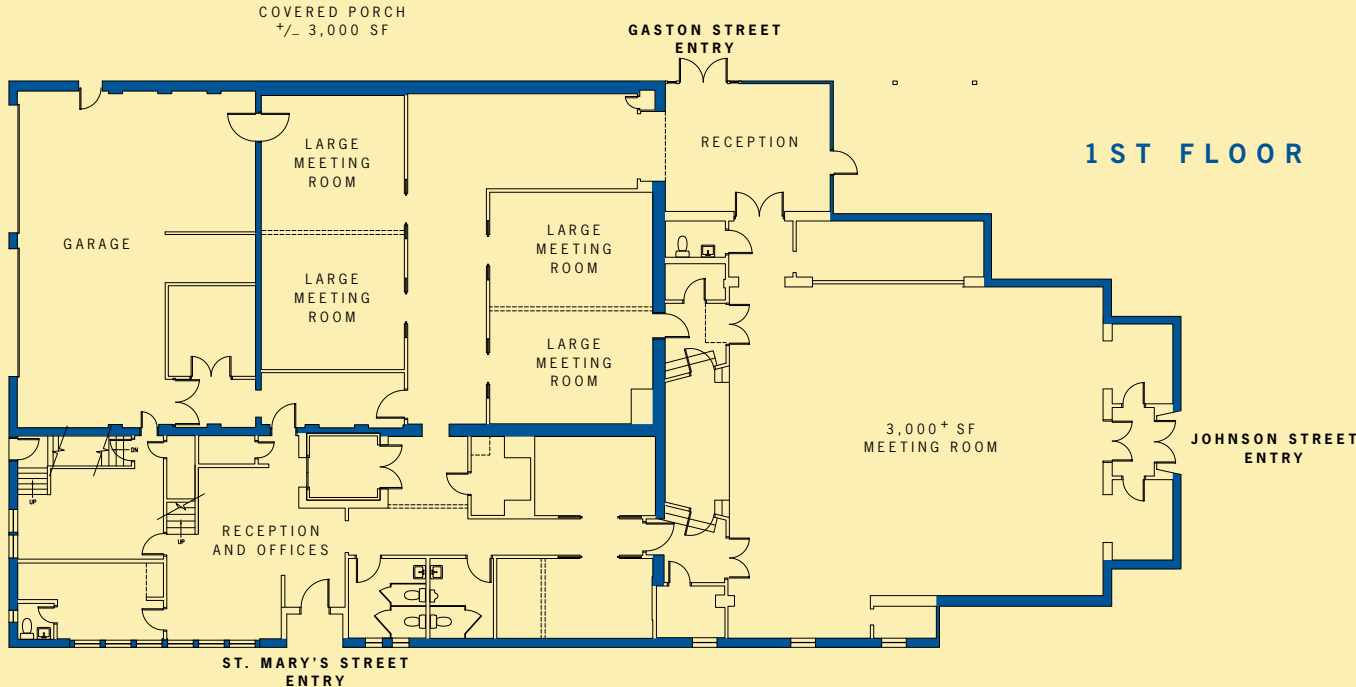


CARTER WORTHY
COMMERCIAL INC.

For more information or to arrange a tour, please call Julian Williamson at 919.828.3866 or visit us online at www.cwcproperty.com

INFORMATION DEEMED RELIABLE, NOT GUARANTEED.

FOR LEASE: 600 ST. MARY'S STREET • RALEIGH, NC 27605



CARTER WORTHY
COMMERCIAL INC.

POST OFFICE BOX 6400
RALEIGH NC 27628-6400

OFFICE: 919.828.2884
FAX: 919.828.2875
MOBILE: 919.828.3866